

# METERING FAUCETS

## 910-G777-19KCP

### Hygiene and Salon Fittings



#### Product Type

Wall Mounted Pedal Valve Bed Pan Cleaner Pedal Valve Bed Pan Cleaner with Loose Key

#### Features & Specifications

- Pedal Valve Bed Pan Cleaner
- 1.5 (5.7 L/min) Spray
- NAIAD Metering Fast Cycle Time Closure Cartridges
- Elevated Vacuum Breaker Assembly
- 3/8" Offset Adjustable Supply Arms with 1/2" NPT Female Thread
- Two 1/2" NPT Female Thread Inlets
- 1/2" NPT Female Thread Outlet
- 53" White Vinyl Hose with Insulated Handle
- Locking Feature to Keep Pedals in a Raised Position
- Elevated Atmospheric Vacuum Breaker, Not Intended for Continuous Pressure Applications
- Atmospheric Vacuum Breaker, Not Intended for Continuous Pressure Applications
- CFNow! Item Ships in 3 Days

#### Performance Specification

- Rated Operating Pressure: 20-125 PSI
- Rated Operating Temperature: 40-140°F

#### Warranty

- Lifetime Limited Faucet Warranty
- 5-Year Limited Cartridge Warranty
- 1-Year Limited Finish Warranty

#### Codes & Standards

- ASME A112.18.1/CSA B125.1
- Certified to NSF/ANSI 61, Section 9 by CSA

Job Name \_\_\_\_\_

Item Number \_\_\_\_\_

Section/Tag \_\_\_\_\_

Model Specified \_\_\_\_\_

Architect \_\_\_\_\_

Engineer \_\_\_\_\_

Contractor \_\_\_\_\_

Submitted as Shown       Submitted with Variations

Date \_\_\_\_\_



2100 South Clearwater Drive  
Des Plaines, IL  
P: 847/803-5000  
F: 847/803-5454  
Technical: 800/TEC-TRUE  
www.chicagofaucets.com

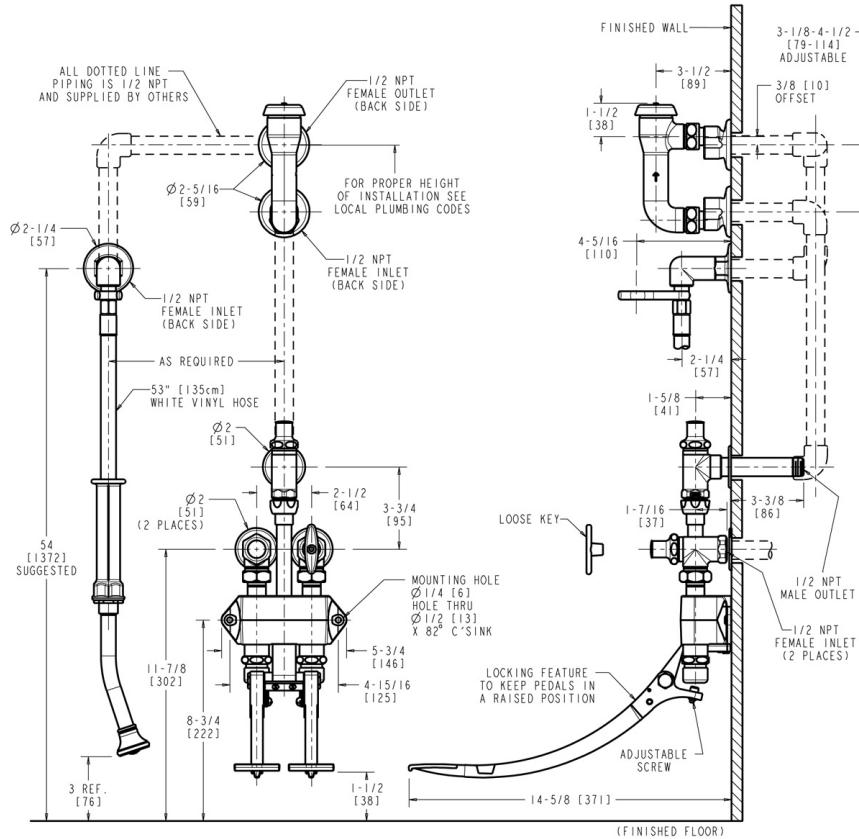
# 910-G777-19KCP

## Hygiene and Salon Fittings



### Architect/Engineer Specification

Chicago Faucets No. 910-G777-19KCP, Bed Pan Cleaner with pedal valve and loose key, wall-mounted, chrome plated. Full-flow, 25-degree, male rose spray. NAIAD rebuildable self-closing metering cartridge, immediate shut-off, opens with push. Includes elevated vacuum breaker assembly. 3/8" offset adjustable supply arms with 1/2" NPT female thread. Two 1/2" NPT female thread inlets. 1/2" NPT female thread outlet. 53" white vinyl hose with insulated handle. Locking feature to keep pedals in a raised position. This product is tested and certified to industry standards: ASME A112.18.1/CSA B125.1, and Certified to NSF/ANSI 61, Section 9 by CSA.



### Operation and Maintenance

Installation should be in accordance with local plumbing codes. Flush all pipes thoroughly before installation. After installation, remove spout outlet or flow control and flush faucet thoroughly to clear any debris. Care should be taken when cleaning the product. Do not use abrasive cleaners, chemicals or solvents as they can result in surface damage. Use mild soap and warm water for cleaning and protecting the life of Chicago Faucet products. For specific operation and maintenance refer to the installation instructions and repair parts documents that are located at [www.chicagofaucets.com](http://www.chicagofaucets.com).

Chicago Faucets, member of the Geberit Group, is the leading brand of commercial faucets and fittings in the United States, offering a complete range of products for schools, laboratories, hospitals, office buildings, food service, airports and sport facilities. Call 1.800.TECTRUE or 1.847.803.5000 Option 1 for installation or other technical assistance.



2100 South Clearwater Drive  
Des Plaines, IL  
P: 847/803-5000  
F: 847/803-5454  
Technical: 800/TEC-TRUE  
[www.chicagofaucets.com](http://www.chicagofaucets.com)